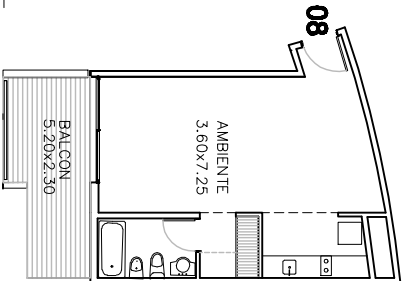
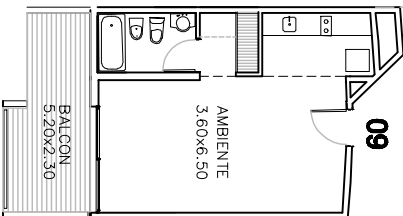


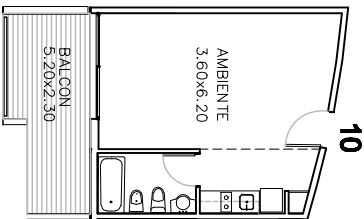
DPTOS. P.13
SUP.: 29.25 M2



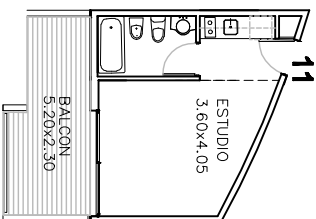
DPTOS. P.13
SUP.: 44.50 M2



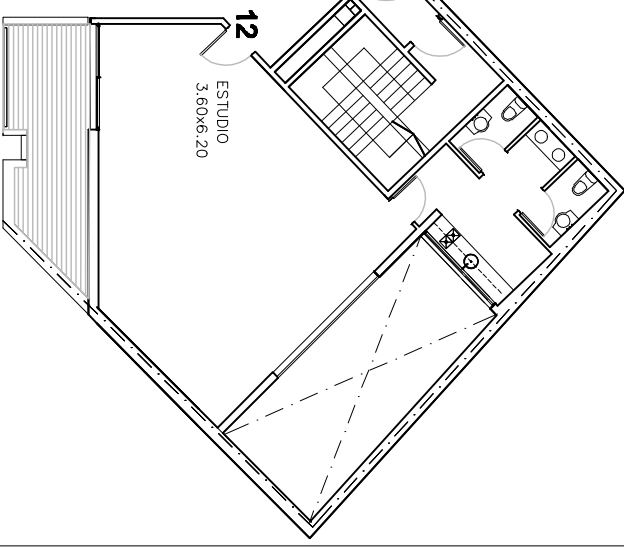
DPTOS. P.13
SUP.: 40.55 M2



DPTOS. P.13
SUP.: 36.75 M2

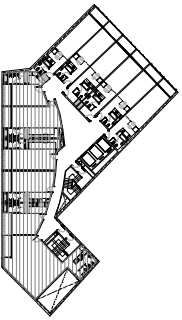


DPTOS. P.13
SUP.: 28.25 M2



DPTOS. P.13
SUP.: 79.25 M2

REFERENCIA



Av. Pte. Julio A. Roca 771

FRENTE JULIO A. ROCA
PLANTA 13 PISO