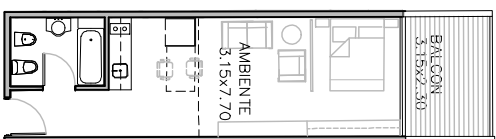
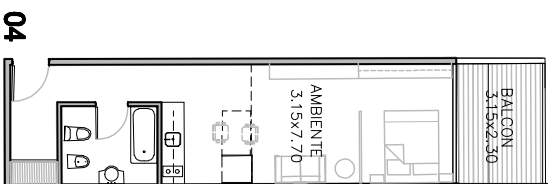


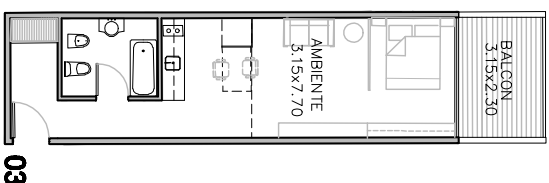
DPTOS. P.13
SUP.: 41.10 M2



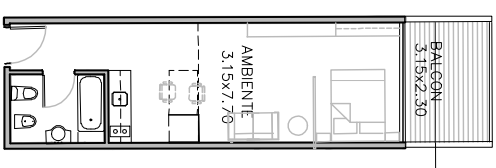
DPTOS. P.13
SUP.: 37.20 M2



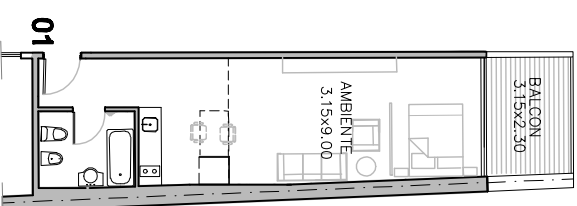
DPTOS. P.13
SUP.: 39.90 M2



DPTOS. P.13
SUP.: 39.90 M2

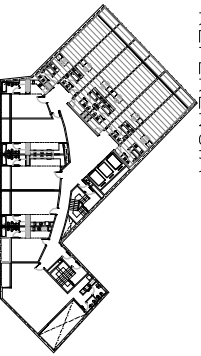


DPTOS. P.13
SUP.: 37.20 M2



DPTOS. P.13
SUP.: 41.10 M2

REFERENCIA



Av. Pre. Julio A. Roca 771

FRENTE PIEDRAS
PLANTA 13 PISO